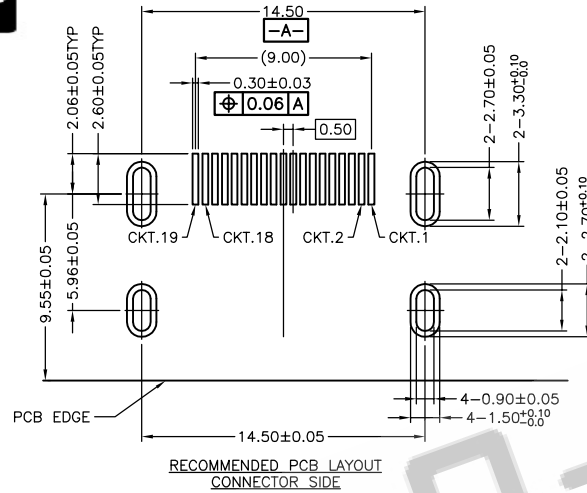
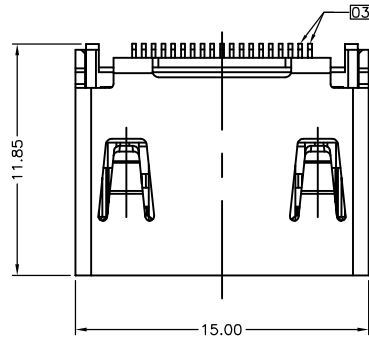


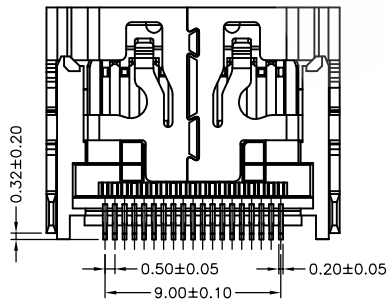
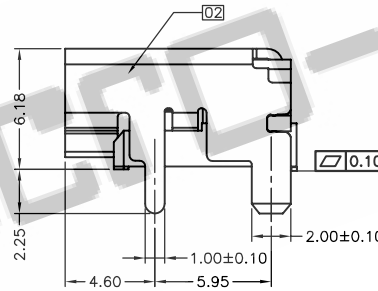
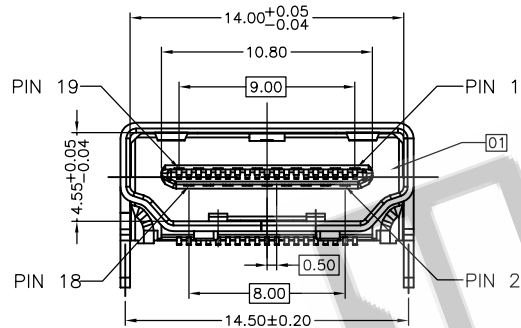
Micro-Ray

RoHS



NOTES:

- MATERIAL AND FINISH SEE THE TABLE.
- MECHANICAL CHARACTERISTICS
 INSERTION FORCE: 44.1N MAX
 EXTRACTION FORCE: 9.8N MIN, 39.2N MAX
 MATING CYCLE: 10000 CYCLES
- ELECTRICAL CHARACTERISTICS
 RATING CURRENT: 0.5A
 RATING VOLTAGE: 40V
 CONTACT RESISTANCE: 10 MILLOHMS OHMS MAX (EXCLUDING CONDUCTOR RESISTANCE)
 INSULATION RESISTANCE:
 a, UNMATED: 100M OHMS MIN AT 500 VDC
 b, MATED: 10M OHMS MIN AT 150 VDC
 DIELECTRIC WITHSTANDING VOLTAGE:
 500V AC/1MINUTE
 OPERATING TEMPERATURE: -20°C--+85°C
 STORAGE TEMPERATURE: -20°C--+65°C



PART NO:
MR-A111928-X-XX-X

- F: SHELL:SPCC Ni
- H: SHELL:C2680 Ni
- N: SHELL:C2680 Au
- Q: SHELL:SPCC Au

- PACKING TYPE
T:TRAY
R:TAPE & REEL

- Contact Area Plating
01:Au 1u"
03:Au 3u"
05:Au 5u"
10:Au 10u"
15:Au 15u"
30:Au 30u"

Item	Title	Material	Dispose	Remark
1	Terminal	Copper Alloy	Mating Area:See P/N Solder Tails:Sn	t=0.20
2	InsertMolding	LCP	UL94V-0	Black
3	Shell	Copper Alloy	Ni:50u" Min. Au:Gold Flash	t=0.50
		Steel	Ni:50u" Min.	

X. ± 0.30	HDMI-A/F CONN. SMT TYPE (INSFRTMOLDING)	DR: Cola Lee	PART NO: MR-A111928-X-XX-X
.X ± 0.25			
.XX ± 0.20			
.XXX±			
X* ± 2*			
.X* ± 1.5*			
	UNITS: mm	SCALE: 1:1	DWG NO: C-A111928-X-XX-R

Micro-Ray

CUSTOMER DRAWING SHEET:10F1
REV: A

REV	ECN NO	DESCRIPTION	DESIGN	DATE
A	TE2018-XXXX	New Drawing	Cola Lee	2018-08-06